



INA Kokoda Workshop PNG LEAF Progress Work 7-8 February, 2013

Roy Banka and Michael Avosa-PNG LEAF Team



USAID | **ASIA**
FROM THE AMERICAN PEOPLE



LOWERING EMISSIONS
IN ASIA'S FORESTS

Some challenges

- What are the current efforts in ‘reducing emissions’ in PNG in addressing deforestation measures?
- What are the policy ‘implications’ in REDD+ field activity sites?
- How can land use plans be further expanded to undertake carbon accounting and mapping?
- Are there any other existing local level laws such Almami LLG Environment Act, 2003,

Adding value to REDD+ Initiatives in PNG

1. Criteria for selection field activity site.
2. Complimenting TNC work on its LUP from LLG integrating Carbon as another sustainable land use option
3. Review Forestry Act to identify prospects for REDD+ integration as a provision.
4. Institutional capacity strengthening for key agencies institutions in PNG



Progress on Forestry Act review, on REDD+ Integration

- Preliminary discussion held with PNGFA saw the need to seek review on Forestry Act in view of REDD+ activities
- Established an ongoing consultations with PNGFA, CLRC on the matter of this consultancy
- A short term consultancy proposal for the review is now before National Forest Board
- Wider consultations with many interest groups will follow
- A report is produced and circulated for wider consultation.



Next Steps

- Wider consultations with many interest groups to follow
- A report is produced and circulated for wider consultation.
- Final report to be presented to PNGFA.
- Final report recommendations might create opportunities to expand current program.
- Strengthen Networking with partners
- Encourage more policy dialogue at all levels of government.
- Capacity needs assessments for key institutions for REDD+ implementation





LEAF WORK IN PNG

PROPOSED COLLABORATION WITH TNC & ADELBERT COMMUNITIES

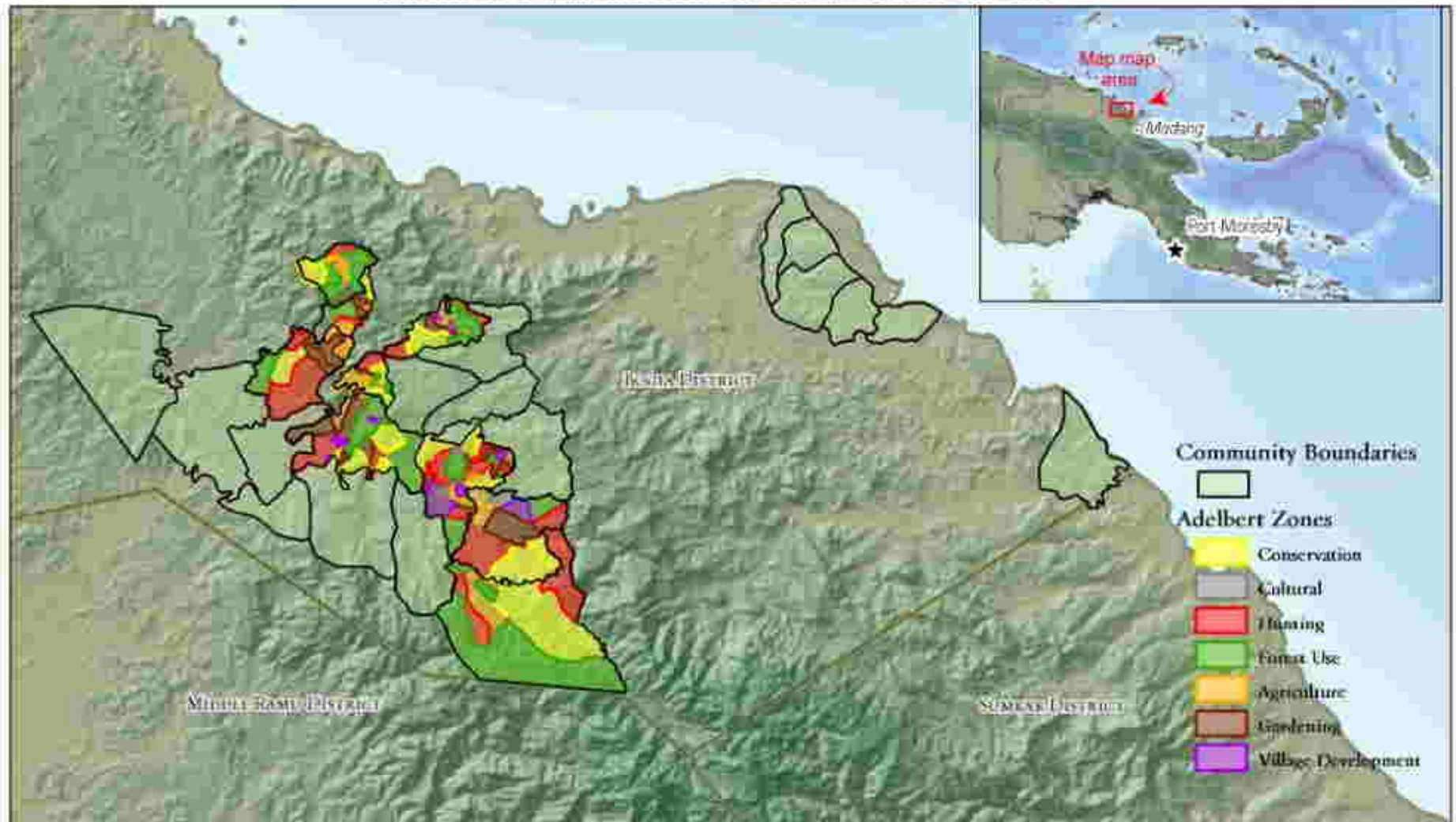


WHY WORK IN ADELBERTS, MADANG PROVINCE ON REDD+?

- Strong community support and interest on conservation, land-use plan, sustainable land-use initiatives
- Commitment and support from LLG, District, Provincial Governments
- Application of a set Selection Criteria based on Science, Social, Political
- What are these Criteria?



Adelbert Mountain Conservation Areas



A total of 25 communities (43,200 hectares) in the Adelbert Mountains of Madang Province are involved in setting up conservation agreements. Of these communities, 9 have signed official Community Conservation Agreements with the Bogia District. These 9 communities (18,000 hectares) have Plans of Management with defined Zones to delineate a variety of land use practices. The Conservation Zones total to 4,380 hectares.

Scale: 0 1 2 3 4 5



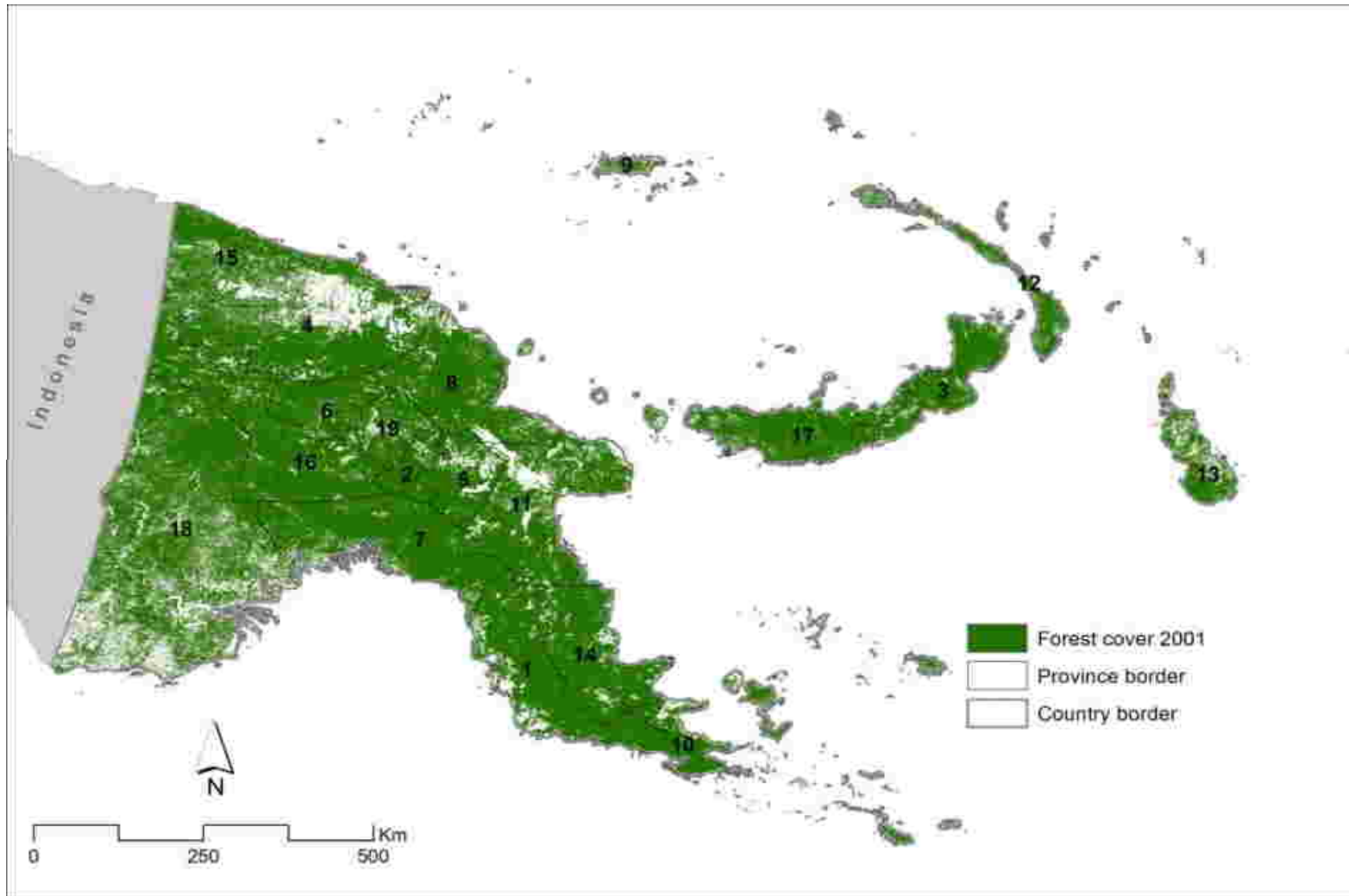
Map by Debra Peterson
15 September 2006
www.dncc.org

Examples of Selection Criteria used

- Carbon density (Madang high carbon/ha)
- Forest change (deforestation/degradation)
- Forest cover status
- Government Support for REDD (1,2,3) - LLG
- PNGFA/OCCD recognised site
- Opportunity for partnerships
- Feasibility for success (potential to scale up)
- Accessibility of site (costs, security)



FOREST COVER STATUS 2001

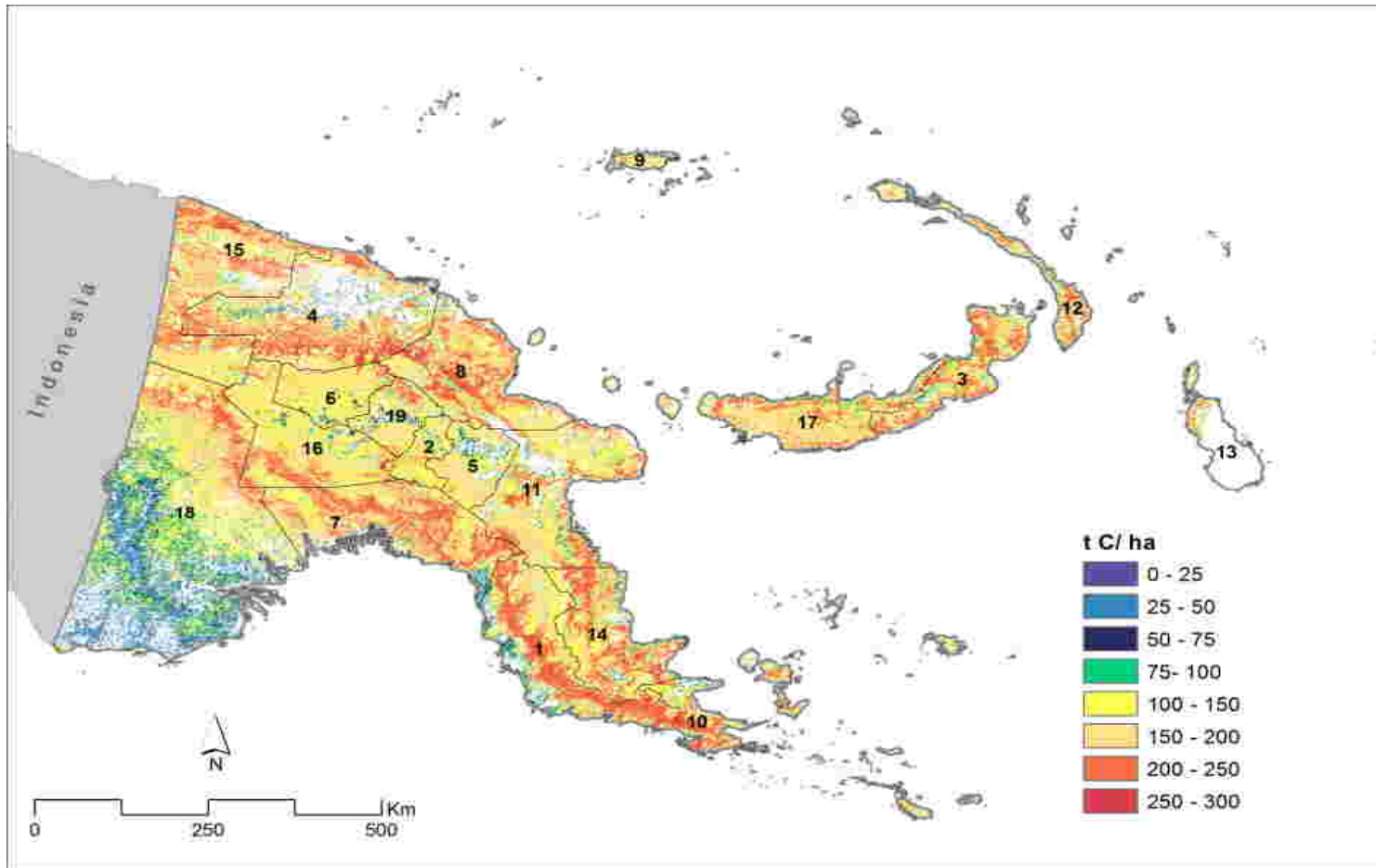


USAID | ASIA
FROM THE AMERICAN PEOPLE



LOWERING EMISSIONS
IN ASIA'S FORESTS

BIOMASS CARBON STOCKS



Madang 180t C ha (highest), Western 115 t C ha (lowest)

SELECTION CRITERIA MATRIX (EXAMPLE)

	Scoring	Documentation	April Salumei	Milne Bay (Suau)	WNB	Pete S Comments
Prioritise Landscapes (first step assessment)						
Representative forest eco-regions of the area		WWF Eco-regions, WWF Document				
Carbon density	130-150=1, 151-170=2, 171-190=3	LEAF Atlas, Ruesch, Aaron, and Holly K. Gibbs. 2008. New IPCC Tier-1 Global Biomass Carbon Map For the Year 2000. Available online from the Carbon Dioxide Information Analysis Center http://cdiac.ornl.gov/epubs/ndp/global_carbon/carbon_documentation.html , WWF Document		3	2	2
Forest cover status (area) since 2000	70-80%=1, 81-90%=2, 91-100%=3	FIMS PNGFA		1	2	3
Forest cover change (deforestation and forest degradation) (% change)	0-0.1%=1, 0.1-0.2%=2, 0.2-0.3%=3	LEAF Atlas, Phil Shearman		2	2	3
Identifying trans-boundary landscapes		Not applicable				
Prioritise Sites Within Landscapes (second step assessment)						
Government support for REDD+						
Experience with innovative carbon financing resource mobilisation (e.g PES schemes, conservation trust funds)	No experience = 1; on preparation = 2, operation = 3			2	1	1
Institutions/mechanisms in forest protection and management (e.g set up a funding source for SFM)				2	1	1
<i>PNGFA or OCCD Mandated site</i>	No support = 1, some support = 2, full commitment = 3			3	3	3
<i>Provincial Authorities support for pilot activities</i>	No support = 1, some support = 2, full commitment = 3			2	3	2
<i>Local level government (LLGs) support for pilot activities</i>	No support = 1, some support = 2, full commitment = 3			2	2	2
Practicality to establish operations (<i>access during LEAF operations</i>)						
Number of past/ongoing projects of SNV, WI or other partner organisations in the pilot site area						
Accessibility to pilot site and internal accessibility	Extremely difficult to access = 1, moderate access = 2, very easy access = 3			2	3	3
Other REDD+ project/activities ongoing (Gov, NGO etc)						
Number of REDD+ projects from Government or NGO in pilot site area						



HOW CAN WE WORK ON REDD+ IN PNG? (Adelbert Ranges, Madang Province)

- Must work with ALL Relevant Stakeholders (Relevant Govt Agencies OCCD/PNGFA/DEC), Different levels of Govts, private sector, local communities – Stakeholder Consultation
- REDD+ new concept – Capacity Building through awareness/education/training
- LEAF to provide technical expertise in the development of REDD+



Activities that TNC & LEAF could work together on in the Adelbert Area

- Land use planning & carbon (community carbon mapping at a local level)
- Biomass work, emission factors, historical and future drivers of deforestation
- Carbon mapping, capacity building & training
- Spatial analysis and Safeguards
- Livelihoods – explore possibilities
- Collaboration with partners (UN REDD, JICA etc.)
- Try to connect local situation through various levels of Government (LLG-National)



LEAF-TNC Ideas

National Level

Support for REDD+ TWG.
ITTO/PNGA Projects. MARSH
Program

Collaborate JICA UN-REDD. Support
PNGRA, OCCD, Forest Law Review,
Climate Change Policy. Nesting Glines

Province:
Madang

Forest Protection (Draft) Bill. Gap
Analysis for Spatial Planning (high
biodiversity & high carbon)

Spatial Planning & Carbon.
Safeguards. Capacity
Building & Training

District:
Bogia

Awareness Raising. Support 5
year district development plan

Capacity Building and Training.
Historical land use mapping?

LGG:
Almami

Scale up to all 37 Wards. 2003
Almami LLG Environ Act

Biomass Work, Historical and Future
'Drivers'

Ward
Level

LUP & Livelihood
Development for 6 Wards

Land Use Planning & Carbon, Community Carbon
Monitoring

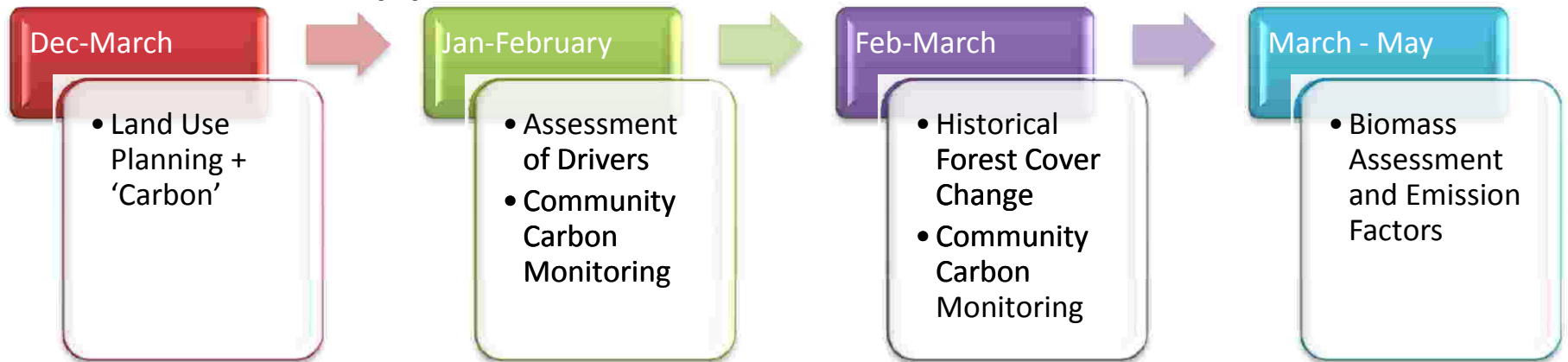
Other work/activities LEAF PNG is doing in the country and is planning to do

- Policy work/support (PNGFA, OCCD)
- Capacity building & training (eg. Reference levels, safeguards)
- Share lessons learnt within the region where LEAF countries work
- Trial out some tools developed in helping REDD+ work (eg. Carbon calculator)
- Provide general information on REDD+ to interested stakeholders (govts, educational institutions – universities curriculum)

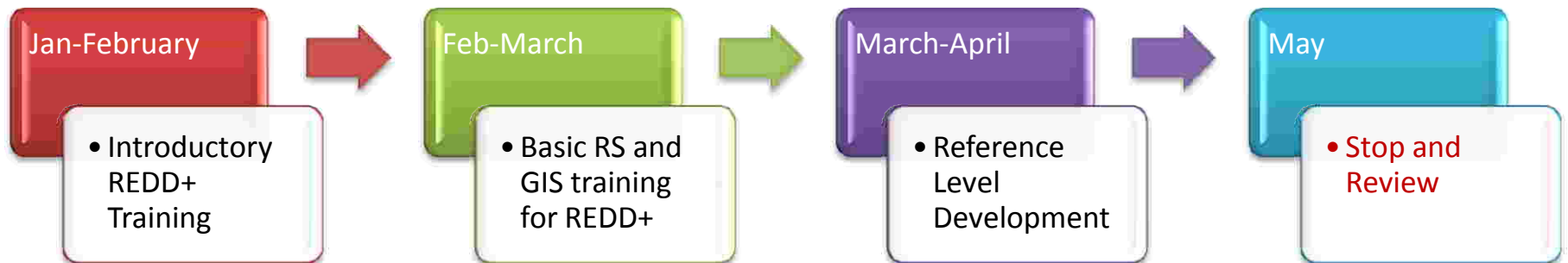


LEAF-TNC Timelines

Technical Support



Training Support



EMTASOL



USAID | **ASIA**
FROM THE AMERICAN PEOPLE

